



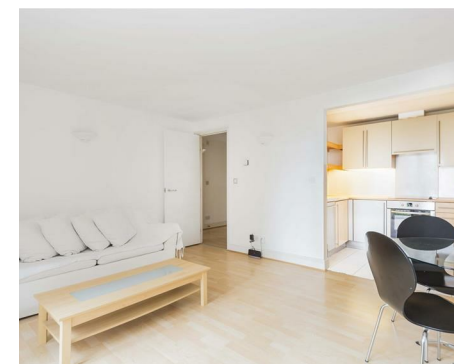
**DAWN  
SANDOVAL**  
*Residential*

1 Bedrooms

Apartment

Located in London

£2,250 Per Month



[info@dawnsandovalresidential.co.uk](mailto:info@dawnsandovalresidential.co.uk) [www.dawnsandovalresidential.co.uk](http://www.dawnsandovalresidential.co.uk)

0207 093 1702



This plan is for layout guidance only. Not drawn to scale unless stated. Windows and door openings are approximate. Whilst every care is taken in the preparation of this plan, please check all dimensions, please do not measure before making any decision about them. (P/2025/24)

**DAWN SANDOVAL**  
*Residential*

5 Indecon Square  
Lightermans Road  
London  
E14 9DQ

0207 093 1702

info@dawnsandovalresidential.

www.dawnsandovalresidential.co.uk

Dawn Sandoval Residential are delighted to offer for rent this first floor one bedroom apartment located within the ever popular Millennium Harbour development.

## Energy Efficiency Rating: C

Agents Note: Whilst every care has been taken to prepare these particulars, they are for guidance purposes only. All measurements are approximate and are for general guidance purposes only and whilst every care has been taken to ensure their accuracy, they should not be relied upon and potential buyers/tenants are advised to recheck the measurements.